

**City of Mesa
Parks and Recreation Advisory Board
Minutes**

DATE: Wednesday, May 14, 2025
TIME: 5:00 PM
LOCATION: 708 W Baseline Road Bldg. #4, Board Room, Mesa, AZ

Pursuant to A.R.S. § 38-431.02, notice is hereby given that the Mesa Parks and Recreation Advisory Board will hold a meeting open to the public at the date and time above.

1. CALL TO ORDER

Chair Campbell called the meeting to order at 5:01 PM.

2. ROLL CALL

BOARD MEMBERS PRESENT: Chair Troy Campbell; Vice-Chair Brent Maldonado; Board Members Nina Fader; Marie Johnson; Cali Goldsby; Orchidia Peterson; Krista Rowley; Melanie Narish; Michelle Streeter; and Jeff Rush

BOARD MEMBERS EXCUSED: Benjamin Manning

3. APPROVAL OF THE MINUTES

It was moved by Member Rush and seconded by Member Narish to approve the regular meeting minutes from March 12, 2025. The motion passed.

Upon tabulation of the votes, it showed:

AYES: Troy Campbell, Brent Maldonado, Nina Fader, Marie Johnson, Cali Goldsby, Orchidia Peterson, Krista Rowley, Melanie Narish, Michelle Streeter, and Jeff Rush
NAYES: None

4. DIRECTOR UPDATE

Board Recognition- Director Moore presented plaques to Orchidia Peterson and Brent Madonado as their terms on the board are ending. She thanked them for their service and for serving two terms on the board. Chair Campbell also thanked them for their service and wished them both the best of luck in the future.

5. HEAR UPDATE AND COMMENT ON FEES AND CHARGES PROPOSED TO BE EFFECTIVE AUGUST 1, 2025 (See attached proposed changes)

Director Moore stated that due to the outlook of the City budget, we are entering into a second round of fees and charges discussion, with an average increase of about 9% across all programs to be effective starting August 1, 2025. All increases will stay within their range so these increases will not need to go before the City Council for adoption. Our department needs to decrease expenditure from the general fund by \$800,000 out of our total budget of about \$55,000,000. Moore also stated that our participation in programs has skyrocketed,

and we have had to bring on additional staff to support that increase. Our programs recover about 30% of our expenses through fees so with additional staffing we are looking to recover a total of \$1.2 million and recover closer to 50% of our expenses over the next couple of years.

Sr Fiscal Analyst, Alison Walker walked through all the fees and charges that were going to increase effective August 1, 2025. (see attached spreadsheets)

After discussion a motion was made by Member Rush and seconded by Vice-Chair Maldonado to support the increases to the fees and charges effective August 1, 2025, as outlined in the staff recommendation. They also recommended a modification to increase the Beer and Wine Permit Fee from \$33 to \$100 as well as correcting the Hohokam meeting room fee to stay within the range at \$100 an hour.

Upon tabulation of the votes, it showed:

AYES: Troy Campbell, Brent Maldonado, Nina Fader, Marie Johnson Cali Goldsby, Orchidia Peterson, Krista Rowley, Melanie Narish, and Jeff Rush

NAYS: Michelle Streeter

ABSENT: Benjamin Manning

Chairperson Campbell declared the motion carried by majority vote.

6. PUBLIC COMMENTS

Chair Campbell reported that we had ten comment cards submitted.

1. Natalie Graham-Not Present-Concerns about proposed elimination of Flow Rider Leagues.
2. Andrew Bonas -Present- Would like the re-instatement of advanced court reservations for Gene Autry (MTPC). Andrew stated that his group has been reserving 2-3 courts five days a week for the past 2 years. With the new process, he needs to go in-person to the counter and reserve courts every day, which is extremely inconvenient. Andrew has been in contact with Jason Hendrix and has concerns about the lack of participation of stakeholders and only addressing concerns from staff. He asked for help from the board to get the new process changed and get input from stakeholders from within the community.
3. Sara Bacca-Not Present- Concerns over most activities for children with disabilities being at 6:30 or later. Chair Cambell stated that staff will reach out to her to address her concerns.
4. Dennis Forlenzo-Present- Concerns about needing more shade cover at Greenfield Park to improve sun safety issues. Dennis stated that his concerns had already been addressed by Brandon Erno.
5. Maria Mancinas-Present-Introduction of Washington-Escobedo Heritage Neighborhood at the NE corner of Center and University. Maria stated that she and the community developed an Advisory Committee with a strategic plan outlining 7 different goals to increase quality of life within the neighborhood. Maria invited the board to the community meeting on June 7th to discuss the vacant Washington Activity Center and the possibility of developing it for a place to meet, play, learn and work.
6. Jillian Ryan-Present- Concerns about the Park Rangers and ask for accountability and termination of all park rangers that have violated the City's code of conduct. She also requested a public statement detailing all the investigation findings.

7. Wes Doetsch-Present-Concerns over the court reservations change at Gene Autry. Mr. Doetsch stated that he would like to be able to continue to reserve and rent out 2 courts at a time as he has previously done for the past 3 years.
8. Emily Parker-Not Present-Concerns with MTPC issues regarding communication, drop-ins, and delegation of staff.
9. Kim Choppi-Present- Concerns at Gene Autry and the reservations process. Ms. Choppi stated that she is representing a social group of 65 women who reserve 2-5 courts at a time. They are frustrated with the new process and their inability to reserve courts along with lack of communication and poor customer service.
10. Mary Kyle-Present- Concerns at Gene Autry Park. Mary Kyle is in the same Pickleball group as Kim Choppi and voiced her concerns over the new reservation process, poor customer service and the lack of communication from staff.

7. DIVISION UPDATES – Recreation, Commercial, Planning & Operations (see attached presentation)

RECREATION-Aimee Manis-Deputy Director, Recreation-Participation numbers were shared for aquatics, adaptive, athletics, recreation centers, and youth programs.

COMMERCIAL: Roger Singleton – Deputy Director, Commercial Operations, presented information to summarize events and attendance at the Convention Center, Amphitheater, The Post, Dobson Ranch Golf Course, the Mesa Cemetery along with all the recent and upcoming Special Events.

PARK PLANNING & OPERATIONS – Brandon Erno – Deputy Director, Planning and Operations, presented updates on projects in progress at Carriage Lane Park, Mesa City Plaza, Reed Park, Quail Run, turf to granite conversions and 2024 bond projects.

8. DIRECTOR'S UPDATES- Andrea Moore

- **Park Ranger's Update** - Director Moore stated that there is an active ongoing City investigation so she cannot speak too much on the subject, but the Park Ranger Division has been moved under the Police Department. They will be running that program moving forward. She stated that right now they are assessing the Park Rangers functions, so the rangers are not out in the field much and their phone number is forwarded to the non-emergency police number. Chair Campbell inquired about who would be updating the public on the investigation. Director Moore answered that it would be the Police Department.
- **FY26 Budget Update** – Director Moore will be going back to Council on Monday for a budget follow-up to give additional information about recommendations to cut/reduce certain programs. These programs include eliminating carnivals at recreation centers, closing centers and pools on City holidays and Sundays, eliminating break camps, open gym on Fridays at Eagles and subsidies to Feastivals. Fun N Fit would not run during July and August, and we would eliminate off-season water classes and reduce lap swim or look at full cost recovery for those. Aquatics special events would only be offered during public swim, and we are looking at reducing subsidies to affiliated group pool rentals. We are looking at getting rid of low participation swim lesson sessions and public swim. FlowRider programs would be canceled during the off-season, or we are looking at the possibility of cost recovery for that programming. We are looking at raising fees across the board for youth groups and private rentals. Member Rowley voiced concerns over the difficulty of booking swim lessons online. Deputy Director Manis recommended that she call the front desk for assistance.

- **Washington-Escobedo Update** – Staff will be meeting with the neighborhood residents on June 7th at 9:30 AM to hear thoughts about the activity center that the charter school is vacating.

9. REPORTS OF MEETINGS OR EVENTS ATTENDED

- Member Streeter volunteered at Celebrate Mesa.
- Member Rowley volunteered at Celebrate Mesa and went to Emerald Park and saw all the new trees around the lake that were planted by volunteers.
- Chair Campbell visited Jefferson and Webster Recreation Centers, Quail Run and hosted a party at Shepherders Park.
- Member Narish mentioned how wonderful the pocket map is and heard about families using it to visit all the parks.

Member Rowley questioned why there was a big hole and construction equipment at Emerald Park near the street at Harris close to the freeway. Deputy Director Erno stated that he would investigate it and let her know what is going on there.

10. NEXT MEETING

The next meeting will be held on September 10, 2025.

11. ADJOURNMENT

APPROVED: 10-0, motion by Member Rowley; seconded by Member Narish. Without objection, the meeting adjourned at 7:07 PM.



Fees and Charges Report

Date: May 14, 2025

To: Parks and Recreation Advisory Board

Through: Andrea Moore, Director, Parks, Recreation and Community Facilities

Subject: Park, Recreation and Community Facilities Department Update to
Schedule of Fees and Charges, Citywide

Purpose and Recommendation

The purpose of this report is to submit for review and discussion staff's proposed changes to fees and charges for certain services provided by the Parks, Recreation and Community Facilities (PRCF) Department.

During the Fiscal Year 2025/2026 budget discussions, PRCF was directed to increase cost recovery for PRCF programs to help offset the rising operational costs. PRCF staff requests the Board's review and discussion of changes for the current Schedule of Fees and Charges for implementation on August 1, 2025, as summarized in this report and detailed in the attached document.

Background

With changes in funding levels from the State of Arizona, the City of Mesa is working on reducing the pressures on the General Fund by 2% across all City Departments. The PRCF FY 25/26 budget is based on achieving this 2% reduction through program reductions and fee increases to improve cost recovery. These changes are intended to be implemented with the start of the Fall 2025 season on August 1, 2025.

Discussion

The targeted increase in revenue in FY 25/26 is \$1.5 million. Included within this is an overall increase in fees of approximately 10% to be implemented as a mid-year increase starting August 1, 2025. The proposed increases all fall within the existing Council-approved ranges so further action through City Council is not needed for implementation. Staff did commit to reviewing the fee increases in detail with the Parks and Recreation Advisory Board.

Methodology

The recommended fees and charges are outlined in the attached schedules for Recreation and Commercial Facilities. The new program fees will allow for having a greater portion of direct costs covered by program participants and maximizing capacity in programs.

Alternatives

1. Take no action. Maintain the fees and charges for services provided by the Department at current levels. No fiscal impact on current revenue projections based on the existing fee structure would result. Targeted reductions in General Fund pressures would need to be achieved through program cancellations.
2. Recommend alternative adjustments to the proposed fees and charges. The fiscal impact of this decision would depend on the changes proposed.

Fiscal Impact

There is an anticipated fiscal impact of \$1,214,000 in FY25/26 with the adjustments outlined in this report.

Parks, Recreation and Community Facilities			
Creation Fees			
Description of Service	Current Fee Range per Unit	Current Fee Actual Effective 4/1/25 - 3/31/26	Unit
POLICIES			
<i>Free Assistance:</i> The fee assistance program provides financial assistance to participants in selected programs when participation would otherwise not be possible due to economic hardship. Individuals who qualify for the public school free or reduced lunch program and/or federal subsidy recipients may receive a discount on selected program fees. Eligible programs are identified with an asterisk (*).			
<i>Scholarships:</i> Scholarships may be offered for participation in selected programs when an outside source provides funding that either covers the entire program or a portion of the registration fee according to the terms of the financial support. Scholarships are available for Mesa residents only.			
<i>Refunds and Credits :</i> Refunds or credit may be given to a household account for reasons of illness, emergencies, etc.			
<i>Fee Adjustments :</i> It is understood that on occasion special consideration may be needed in determining fees for groups or individuals having circumstances uncommon to those in the fee structure criteria. In these cases, the Parks and Recreation Director (or designee) will review all such requests. Request shall be submitted in writing to the Director (or designee) prior to the event, activity or service. The request may be taken to the Parks and Recreation Board for consideration, as determined by the Director. In addition, the Director is authorized to institute special discounts, promotions or other short-term fee adjustments that are of benefit to the City, program and/or service.			
<i>Contracts/Agreements :</i> Individual contracts or agreements are negotiated with various community groups that establish specific fees and charges as part of the approved contract or agreement. Examples include Mesa Public Schools, Gilbert Public Schools, Mesa Convention and Visitors Bureau, and Mesa Parent Youth Athletic Association.			
<i>Marketing:</i> Printing and marketing costs associated with division brochures are included in program fees.			
ADAPTIVE PROGRAMS*			
General Programs per person/per session-Resident	\$2.00-\$600.00	\$5.00-\$65.00 - Varies from sport to program. Price will depend on specific activity and length of program	Raise \$5 fees to \$8; \$15 to \$24; \$25 to \$40; \$30 to \$48; \$40 to \$64; \$50 to \$90
Summer Camp/person-Resident	\$50.00-\$500.00	\$400 or DDD Pay	\$440
Summer Camp/person-Non-Resident	\$80.00-\$600.00	\$400 or DDD Pay	\$440
AQUATICS*			
<i>Competitive Programs</i>			
Swim, Dive, Synchronized Swimming and Water Polo/Per Session			
Resident	\$25.00-\$115.00	\$110	\$115
Non-Resident	\$30.00-\$150.00	\$132	\$150
<i>Public Swim</i>			
Season pass - all pools (Household)	\$100.00-\$300.00 Each	\$225 (\$150 discounted price)	\$250 (preseason sale \$185)

Description of Service	Current Fee Range per Unit	Current Fee Actual Effective 4/1/25 - 3/31/26	Unit	NEW Proposed Fee Effective 8/1/25- 3/31/26
Season pass - all pools (Individual)	\$15.00-\$150.00 Each	\$56 (\$44 discounted price)		\$120 (Preseason sale \$90) adult, \$75 (Preseason sale \$56) senior/children
Public swim - all pools:				
Infants (6 months and younger)	Free			
Youth (17 years and younger)	\$1.00-\$10.00			\$3.00
Adults (18 years and older)	\$3.00-\$20.00	\$4		\$5.00
Seniors (55 years and older)	\$1.00-\$10.00	\$2		\$3.00
Aquatic lessons/per person-Resident	\$10.00-\$250.00	\$27		\$30.00
Aquatic lessons/per person-Non-Resident	\$19.00-\$300.00	\$32		\$35.00
Flowrider lessons/per person Resident	\$30.00-\$100.00	\$37		\$40.00
Flowrider lessons/per person Non-Resident	\$35.00-\$150.00	\$44		\$50.00
Private Lessons/Per Person Resident	\$60.00-\$100.00	\$82	Session	\$95.00
Private Lessons/Per Person Non-Resident	\$75.00-\$115.00	\$98	Session	\$115.00
Rhodes Flowrider				
Hourly Admission - 17 and younger	\$5.00-\$25.00	\$10	Hour	\$11
Hourly Admission - 18 and older	\$8.00-\$40.00	\$14	Hour	\$15.50
Hourly no fence - 17 and younger	\$5.00-\$25.00	\$12	Hour	\$13.50
Hourly no fence - 18 and older	\$8.00-\$40.00	\$20	Hour	\$22
Flowrider League	\$10.00-\$250.00	\$105	Session	\$110.00
Flowrider League Drop-in	\$10.00-\$250.00	\$45	Each	\$50.00
Flow Room Rental (2 Hour Minimum Rental)	\$40.00-\$100.00	\$40	Hour	\$44
Flowrider Rental	\$100.00-\$1,000.00		Hour	
<i>Pool Rentals</i>				
All aquatics complexes (Brimhall, Carson, Fremont, Kino, Rhodes, Shepherd, Skyline, Stapley, Mesa).				
Pool rentals and reservations are based upon group size and aquatic complex reserved.				
Booking Fee	\$10.00-\$100.00	\$25	Rental	
Lifeguard fee - number of guards required is based on group size and aquatic complex.				
Per guard per hour (resident rate)	\$25.00-\$80.00	\$30	Hour/Guard	\$33
Per guard per hour (non-resident rate)	\$30.00-\$90.00	\$35	Hour/Guard	\$39.00
Per guard per hour (commercial rate)	\$35.00-\$100.00	\$45	Hour/Guard	\$50.00
Lifeguard for Competitive Meets	\$30.00-\$50.00	\$38	Hour/Guard	\$42.00
Event Set/Break Down Fee				
Resident/Non-Profit	\$0.00-\$500.00	\$100	Hour/Guard	\$110
Non-Resident/Commercial	\$0.00-\$600.00	\$150	Hour/Guard	\$165
Partnering group participant fee-non-resident	\$5.00-\$10.00	\$8	Quarter	\$10.00
Seasonal Lane Surcharge (September - April)		\$1.50	Per lane/Per Hour	

Description of Service	Current Fee Range per Unit	Current Fee Actual Effective 4/1/25 - 3/31/26	Unit	NEW Proposed Fee Effective 8/1/25- 3/31/26
Partnering Youth Group Practice Rental (Short Course-M)	\$3.00-\$100.00 4, 6, or 8	\$3	Lanes/Hour	\$4.00
Partnering Youth Group Practice Rental (Long Course-50M)	\$4.50-\$100.00 4, 6, or 8	\$4.50	Lanes/Hour	\$5.00
Partnering Adult Group Lane Fee (Short Course-25 yards)	\$6.00-100.00 4, 6, or 8	\$7	Lanes/Hour	\$10.00
Partnering Adult Group Lane Fee (Long Course-50M)	\$9.00-\$100.00 4, 6, or 8	\$9	Lanes/Hour	\$12.00
Commercial Group Lane Fee (Short Course-25 Yards)	\$10.00-\$150.00 4, 6, or 8	\$10	Lanes/Hour	\$15
Commercial Group Lane Fee (Long Course-50M)	\$15.00-\$150.00 4, 6, or 8	\$15	Lanes/Hour	\$20.00
Aquatics Facility Classroom Use Fee	\$25.00-\$100.00	\$25	Hour	\$30.00
Office/Storage Rental Fee	\$50.00-\$200.00	\$150 - Office, \$75 - storage	Month	\$165 / \$85
PARKS MISCELLANEOUS				
<i>Bandshell and Mobile Bleachers:</i>				
Labor, per hour, minimum of 4 hours, 2 staff minimum, holiday rates may apply	\$28.00-\$60.00	\$42-\$50	Per hour/Staff member	\$48
Facility Booking Fee (i.e., Aquatics, Sports Fields, Ramadas)	\$5.00-\$100.00		Rental	
<i>Large Events</i>				
Event Security	\$70-\$120	Park Ranger - \$60 per hour; PD - \$70-\$120 per hour		
Cleaning/Damage Deposit	\$500.00-\$5,00.00	\$1,000-\$2,000	Per Event	
Equipment Rental	\$10.00-\$1,00.00	\$10-\$25	Per Item	
<i>Park Use Options:</i>				
Ramada/per hour - Resident	\$10.00-\$60.00	Small -\$13/hr, Medium - \$20/hr Large - \$25/hr, XL \$33/hr Premium Small -\$23/hr, Medium - \$30/hr Large - \$35/hr, XL \$43/hr		\$15 / \$22 / \$28 / \$37 Premium \$26 / \$34 / \$39 / \$48
Ramada/per hour - Non-Resident	\$12.00-\$72.00	Small -\$16/hr, Medium - \$23/hr Large - \$30/hr, XL \$37/hr Premium Small - \$26hr, Medium - 33/hr, Large - \$40/hr, XL - \$47/hr		\$18 / \$26 / \$33 / \$41 Premium \$29 / \$37 / \$44 / \$52
Ramada Cleaning Fee	\$15.00	\$15.00		
Eastmark Amphitheater – Resident	\$20.00-\$60.00	\$60.00	Hour	
Eastmark Amphitheater - Non-Resident	\$24.00-\$72.00	\$72.00	Hour	
Open Space Groups and Events (group size 10-1,000)				
Resident	\$10.00-\$500.00	\$18 Small, \$28 Medium, \$54 Large, \$105 Ultra	Hour	\$20 / \$31 / \$60 / \$116
Non-Resident	\$12.00-\$600.00	\$21 Small, \$33 Medium, \$65 Large, \$125 Ultra	Hour	\$23 / \$37 / \$72 / \$138
Beer/Wine Permit-based on event and group size	\$25.00-\$500.00	\$30	Each	\$33

Description of Service	Current Fee Range per Unit	Current Fee Actual Effective 4/1/25 - 3/31/26	Unit	NEW Proposed Fee Effective 8/1/25-3/31/26
Water Hook-Up	Charges will be passed through from City of Mesa Water Resources Metered			
Critical Hook-Up	\$10.00-\$50.00	5 Hour	Hour	\$35
Special Event Space Rental (No license required per City Code)	\$0 - \$3,000	Non profit: Move in \$400/day, \$1,200/event day; Commercial: Move in \$700/day, \$2,000 event day	Day	
Equipment Fee (Inflatables, Tents, Portable Restrooms, Stage, Food Vendor/Truck, etc.)	\$10.00-\$500.00	\$10-\$250/each - Currently charge \$35/food truck, \$10/portable restroom, \$250/large stage for each item that is brought in to the park	Item/Event	\$39 / \$11 / \$275
Event Fee	\$0.50-\$3.00		Per Participant/Per Attendee	
Event Vendor Fees	\$10.00-\$1,000.00		Vendor/ Event/Day	
Ice Rink				
Tickets	\$10.00-\$50.00	\$10	person	\$11
Miscellaneous	\$1.00-\$25.00	\$5	Skate Assists	\$6.00
Rental	\$0 - \$3,000	\$2,000	Hour	
SPECIAL EVENTS (CITYWIDE, ALL FACILITIES AND PROPERTIES)				
Application Fee - 30+ Days Prior to Event		\$100.00	Event, Day	
Application Fee - 15-29 Days Prior to Event		\$200.00	Event, Day	
Small Scale Event Fee		\$50.00	Event	
Set Up, Support, and Teardown	\$20-\$50	\$30.00	Per hour, 2 staff min	
City-Produced Ticketed Special Event	\$0-\$30	\$15.00	Per Person	
Multi-Repeating Event Fee		Fee multiplier by number of events multiplied by 50%, Day (Max 6 Events)		
Change/Transfer Fee	\$50.00	\$50.00		
License Cancellation Fee	\$50.00-\$200.00			
RECREATION CENTERS/GYMNASIUMS				
<i>Jefferson Gymnasium/Rec Center Webster Gymnasium/Rec Center Eagles Community Center Red Mountain Center</i>				
Daily Use / Pass	\$2.00-\$8.00	ECC - \$2 youth/senior; \$3 adult RMC - \$4 youth/senior; \$5 adult	Visit	\$3/\$4
Daily Use - includes gymnasium climbing wall open sessions, indoor track fitness equipment, fitness classes, based on availability.		RMC - \$5 daily adults, Youth and Seniors \$4 (seniors is 55+, youth 6 months -17yrs)		\$6 / \$5

Description of Service	Current Fee Range per Unit	Current Fee Actual Effective 4/1/25 - 3/31/26	Unit	NEW Proposed Fee Effective 8/1/25- 3/31/26
Monthly Membership	\$10.00-\$84.00	\$28-\$58 RMC- single month - youth/teen \$28 (6mo-17yrs), adult \$35 (18-54), Senios \$28 (55+), Family \$70 Renewable - youth/teen \$26 (6mo-17yrs), adult \$26 (18-54), Senios \$20 (55+), Family \$58	Each	Single Month Youth/Teen/Senior - \$30, Adult - \$38, Household - \$78 Renewable Youth/Teen/Senior - \$22, Adult - \$28, Household - \$64
Out of School Time Programs-Resident*	\$5.00-\$120.00	\$43/month After School; \$108/week School Break Camps	Program	\$46 / \$115
Out of School Time Programs-Non-Resident	\$5.00-\$150.00	\$51/month After School; \$130/week School Break Camps	Program	\$55 / \$138
Facility Rentals:				
Large Space (2,000 SQ FT and up)	\$40.00- \$220.00	\$70-\$150 per hour resident; \$85-\$180 per hour non-resident; \$100-\$215 per hour commercial	Hour	\$80-178 / \$98-207 / \$115-220
Medium Space (1,000-1,999 SQ FT)	\$30.00-\$120.00	\$30-\$70 per hour resident; \$36- \$85 per hour non-resident; \$43-\$100 per hour commercial	Hour	\$35-80 / \$41-98 / \$49-115
Small Space (up to 999 SQ FT)	\$18.00-\$60.00	\$18- \$24 per hour resident; \$22- \$28 per hour non-resident; \$26-\$34 per hour commercial	Hour	\$20-28 / \$25-32 / \$30-39
Overtime/per hour/per staff (overtime is charged for any rental time before and after normal hours of operation. Number of staff is determined by size and scope of rental)	\$25.00-\$100.00	\$30	Per hour/Per staff	\$35
Equipment Use	\$10.00-\$50.00 Hour \$10.00-\$50.00 Each	\$30	Each	\$35
Climbing Wall:				
Belay Certification - Resident	\$5.00-\$10.00	\$10.00	Class	
Belay Certification - Non-Resident	\$6.00-\$12.00	\$10.00	Class	\$11
Rental per hour-Resident	\$86.00-\$100.00	\$95.00	Hour	\$100
Rental per hour-Non-Resident	\$104.00-\$120.00	\$114.00	Hour	\$120
Rental per hour - Commercial	\$120.00-\$160.00	\$136.00	Hour	
Enhanced Fitness Services:	\$35.00-\$200.00	\$45-\$63		\$46 - \$67
Wellness Seminars:	\$5.00-\$50.00	\$10 AND UP		
Special Interest Classes/Workshops:				
Residents	\$4.00-\$200.00	\$14.00		\$16.00
Non-Resident	\$5.00-\$240.00	\$16.00		\$18.00
MESA TENNIS CENTER (TENNIS AND PICKLEBALL CENTER, KLEINMAN SPORT COURTS, SAND VOLLEYBALL COURTS)				

Description of Service	Current Fee Range per Unit	Current Fee Actual Effective 4/1/25 - 3/31/26	Unit	NEW Proposed Fee Effective 8/1/25- 3/31/26
Court Rental	\$3.00-\$30.00	Tennis Day \$8; Tennis Night \$12; Pickleball Day \$6; Pickleball night \$8; Sand Volleyball Day \$7, Sand Volleyball Night \$12	Per Hour/ Per Court	\$9 / \$13
Ball Machine Rental (Includes Court)	\$12.00-\$20.00		18 Per Hour/Each Per Court	\$20.00
Youth Lessons (Group) *	\$10.00-\$20.00		\$12.00 Per Hour/ Per Lesson	\$13.00
Adult Lessons (Group)	\$10-\$25	\$14 Tennis / \$15 Pickleball	Per Participant/Hour	\$17
Adult Tournament	\$16.00-\$50.00 per participants		\$28 Each Participant	\$30.00
Junior/Youth Tournament	\$15.00-\$50.00 per participant		\$26 Each Participant	\$27.00
Outside Organization League Rental	\$20.00-\$60.00 each court	\$20 - two hour match / \$24 - 2.5 hour match / \$26 - evening league 2 hours	Each Participant	\$22 / \$26 / 28
Adult Leagues	\$30.00-\$300.00	\$80 - Singles / \$60 - doubles	Each Participant/ Per Team	\$84 / \$66
Drop-in Play	\$2.00-\$60.00	\$4 - one visit (2 hours) / \$30 - ten visits / \$55 - twenty visits	Per Visit /Per Package	\$5 / \$35 / \$60
Groups, Parties, and Events	\$150.00-\$300.00	\$150.00-\$300.00	Hour	
SPORTS COMPLEX FIELD USE				
Baseball Complex (Locked): Fitch Sports Complex; Gene				
Autry Sports Complex: Red Mountain Baseball Complex;				
Riverview Baseball Complex				
Soccer Complex (Locked): Red Mountain Soccer Complex,				
Quail Run Soccer Complex, Eagles Soccer Complex, Lehi				
Sports Park				
Softball Complex (Locked): Fiesta Sports Park, Quail Run				
Baseball/Softball Complex; Eastmark Sports Complex; Red				
Mountain Softball Complex; Skyline Softball Complex;				
Monterey				
Field use - Baseball Complex-day use	\$30.00-\$36.00		\$32 Hour	\$36.00
Field use - Baseball Complex-night use	\$45.00-\$50.00		\$48 Hour	\$50.00
Field use - Softball or Soccer Complex-day use	\$15.00-\$18.00		\$16 Hour	\$18.00
Field use - Softball or Soccer Complex-night use	\$27.00-\$33.00		\$29 Hour	\$32.00
Sports Complex & Court Prep	\$55.00-\$100.00		\$80 Per field	\$85
Custom Sports Complex & Court Prep	\$55.00-\$500.00		\$100 Per field	\$140
Athletics Facility Supervision	\$17.00-\$32.00		\$30.00 Staff/Hour	\$32
Security Deposit	\$150.00-\$500.00		\$150.00	\$180
Field Deposit	\$150.00-\$180.00		\$150.00	\$180
League/Tournament Fees	\$120.00-\$500.00		varies by sport	\$144 - \$500
SPORTS LEAGUES				

Description of Service	Current Fee Range per Unit	Current Fee Actual Effective 4/1/25 - 3/31/26	Unit	NEW Proposed Fee Effective 8/1/25- 3/31/26
t sports leagues (May include, but not limited to ball, soccer, baseball, flag football, basketball, volleyball, recess for adults, mesa hikes, cornhole, eeball, and ultimate)	\$20.00-\$2,000.00	Kickball - \$285.00, Softball - \$625.00, Volleyball - \$345.00, Recess for Adults- One Player \$55.00 , Two Player \$110.00	Per Registrant	\$314/ \$650 / \$380 / \$61/ \$121
Used softballs	\$1.00-\$3.00	\$3.00	Ball	
Used softballs	\$10.00-\$13.00	\$13.00	Dozen	
Softball Umpire Uniform	\$10.00-\$45.00	\$40.00	Each	
Softball Program Shirt	\$10.00-\$30.00	\$25.00	Each	
Adult Sports League Cancellation/Change Fee After Deadline	100% of Fee			
Adult Sports Tournaments	\$50.00-\$750.00	\$225/per team		\$248.00
Youth Sports Leagues, Camps and Clinics (may include, but not limited to kickball, soccer, baseball, flag football, basketball, volleyball, dodgeball, etc.)				
Resident*	\$5.00-\$200.00	Jr Suns YBB - \$90 per player / NFL Flag - \$90 per player / Volleyball - \$90 per player / Playball - \$80 per person / Clinics - \$75 per person / Olympic Camp - \$110 per person per week		\$99 / \$88 / \$83 / \$110
Non-Resident	\$6.00-\$220.00	\$6		\$8
Affiliate Youth Groups	Per Team			
Field Use and Lights - Before 5pm	\$10.00-\$30.00	\$10.00	Hour	\$11
Field Use and Lights - After 5pm	\$16.00-\$30.00	\$16.00	Hour	\$18.00
Concession Stand Rental	\$10.00-\$100.00		Month	
Storage Fee	\$20.00-\$100.00	\$75	Per Month/Per Facility	\$83.00
Schedule Change Fee	\$25.00	\$25	Per Change	
RECREATION ACTIVITIES				
Teen Leadership Program - Resident	\$21.00-\$130.00	\$32.00	Program	\$40.00
Teen Leadership Program - Non-Resident	\$23.00-\$143.00	\$38.00	Program	\$45.00
Partial day programs/per session/per person-Resident*	\$10.00-\$150.00	\$47	Week (18 Programming Hours)	\$51.00
Partial day programs/per session/per person-Non-Resident*	\$12.00-\$180.00	\$56	Week	\$65.00
Full day programs/per week/per person-Resident*	\$21.00-\$160.00	\$142	Week	\$152.00
Full day programs/per week/per person-Non-Resident*	\$25.00-\$190.00	\$170	Week	\$183.00
Specialty Camps/Programs/Events	\$1.00-\$200.00	Low stakes camping - \$40.00 per tent, Archery - \$80.00 per session	Program/Event	\$44 / \$88
Fun and fitness mobile recreation unit	\$0.00-\$500.00	\$0.00	Rental	
MISCELLANEOUS FEES				

Description of Service	Current Fee Range per Unit	Current Fee Actual Effective 4/1/25 - 3/31/26	Unit	NEW Proposed Fee Effective 8/1/25- 3/31/26
Shop Items	\$0.00-\$500.00		Each	
Cancellation/Reservation Cancellation Charge	\$2.00-\$500.00	\$2 SIC, \$5 afterschool program, Reservations 100% refund 60 days prior, 30-59 days prior is %50 of total, 29 days prior is 0% refunded.	Cancellation	
Late Pickup Fees	\$5.00-\$50.00	\$5 every five minutes for afterschool programs	Late Pickup	

Parks, Recreation and Community Facilities				
Commercial Fees				
Description of Service	Current Fee Range	Current Fee Actual Effective 4/1/25 - 3/31/26	Unit	NEW Proposed Fee to Effective 8/1/25 - 3/31/26
POICIES				
Adjustments: There will be occasions when special consideration may be needed to negotiate fees that fall outside of the adopted fees and charges structure. Therefore, the Director (or designee) is authorized to negotiate special pricing if it is in the best interest of the City of Mesa.				
Refunds and Credits: Refunds or credit may be given upon approval by the Parks, Recreation and Community Facilities Director or designee.				
Cancellation Policy: 50% of the total rate may be retained if the event is cancelled (dependent upon date of cancellation).				
Contracts/Agreements: Individual contracts or agreements are negotiated with various groups to establish specific fee and charges as part of the approved contract or agreement.				
HOHOKAM STADIUM				
<i>Non-Profit Organizations</i>				
Commercial/Special Event Uses/per day	15% Discount on Commercial Rates \$1,500.00-\$2,500.00 or 12% of net Ticket Sales plus expenses whichever is greater	\$1,800		\$2,000
Group Rental Per Day	\$500.00-\$2,500.00 Day	\$1,000	Day	\$1,200
Meeting Room/per hour	\$80.00-\$100.00 Day	\$100	Day	\$110
League/Tournament Fees	\$210.00-\$600.00 Game	\$300	Game	\$400
Contract/Agreement Use	Negotiated based on Agreement			
<i>Miscellaneous Stadium/Field Fees</i>				
Lights/per hour				
Regular lighting	\$55.00-\$65.00	\$65	Hour	
Field preparation/	\$95.00-\$115.00	\$110	Per Prep	
Field supervision	\$25.00-\$50.00	\$30	Per hour/Per employee	\$35
Scoreboard rental	\$50.00-\$150.00	\$100	Day	
Scoreboard operator	\$30-\$500 At City Discretion, City Staff/HR or Pass through form outside vendor	\$30	Hour (if requested)	\$75
Clean-up and damage deposit (refundable)	Negotiated based on size and scope of Event			
Paved parking lot for special events per day	Negotiated based on size and scope of Event			
<i>Labor</i>				
Event Labor (general) (1-hour minimum)	\$30.00-\$45.00 Hour	\$35	Hour	
Supervisors, Box Office, Gate, Etc.	\$30.00-\$45.00 Hour	\$35	Hour	\$45
Electrician (4-hour minimum)	Charges will be passed thru from the contractor to the client. Arrangements are made by the City.			
<i>Miscellaneous</i>				
Stadium Pre/Post Custodial and Cleaning Services	Charges will be passed through from the contractor. Arrangements are made by the City.			

Description of Service	Current Fee Range	Current Fee Actual Effective 4/1/25 - 3/31/26	Unit	NEW Proposed Fee to Effective 8/1/25- 3/31/26
Public Control Services for Special Events	Charges will be passed through from the City of Mesa Transportation and Police Departments. Arrangements are made by the City.			
Parking Fee	Negotiated based on size and scope of Event			
Security Services City of Mesa Police Department Off-Duty, Contractor or Park Rangers	Charges will be passed thru from contractor to the client; arrangements to be made by the City.			
CEMETERY				
<i>Cemetery Lots</i>				
Companion Grave	\$2,290.00-\$4,300.00	\$2,290.00-\$3,300.00		
Single Grave	\$1,800.00-\$3,000.00	\$1,800.00-\$2,600.00		
Infant Grave	\$515.00-\$1,000.00	\$515.00-\$540.00		
Single Conversion to Companion	\$490.00-\$1,200.00	\$490.00-\$700.00		
<i>Cremains</i>				
Scattering Garden	\$140.00-\$500.00	\$140.00		
Urn Garden	\$720.00-\$2,100.00	\$1,120.00		
Memorial Wall Plaque Space	\$400.00-\$900.00 Space	\$500.00	Space	
<i>Niche Bank</i>				
Upper 3 Levels	\$1,750.00-\$2,100.00	\$1,750.00		
Lower 2 Levels	\$1,460.00-\$1,900.00	\$1,460.00		
<i>Perpetual Care</i>				
Single/Companion	\$300.00-\$500.00	\$300.00		
Infant/Ash Lot/Niche	\$150.00-\$250.00	\$150.00		
<i>Opening and Closing</i>				
Single Grave	\$790.00-\$900.00	\$790.00		
Companion Upper	\$790.00-\$900.00	\$790.00		
Companion Lower	\$1,050.00-\$1,275.00	\$1,050.00		
Infant	\$315.00-\$475.00	\$315.00		
Cremation Urn	\$210.00-\$400.00	\$210.00		
Niche Inurnment	\$210.00-\$400.00	\$210.00		
<i>Canopy & Chair Set Up</i>	\$105.00-\$250.00	\$105.00		
<i>Disinterment</i>				
Single Grave	\$1,630.00-\$1,800.00	\$1,630.00		
Companion Top	\$1,630.00-\$1,800.00	\$1,630.00		
Companion Bottom (if upper is occupied)	\$3,260.00-\$3,450.00	\$3,260.00		
Companion Bottom (if upper is unoccupied)	\$1,995.00-\$2,150.00	\$1,995.00		
Infant	\$920.00-\$1,100.00	\$920.00		
Cremation	\$280.00-\$450.00	\$280.00		

Description of Service	Current Fee Range	Current Fee Actual Effective 4/1/25 - 3/31/26	Unit	NEW Proposed Fee to Effective 8/1/25- 3/31/26
<i>Monument Installation</i>				
18" x 18" (infant)	\$175.00-\$325.00	\$175.00		
24" x 24" (single)	\$230.00-\$400.00	\$230.00		
30" x 30" (companion)	\$300.00-\$450.00	\$300.00		
36" x 36" (companion)	\$365.00-\$475.00	\$365.00		
12" x 48"	\$460.00-\$525.00	\$460.00		
12" x 12" (ash lot)	\$105.00-\$200.00	\$105.00		
Vase installed at date later than marker	\$100.00-\$175.00	\$100.00		
<i>Miscellaneous Services</i>				
Monument removal/single	\$110.00-\$210.00	\$110.00		
Monument removal/double	\$220.00-\$330.00	\$220.00		
Plaque Installation Fee	\$90.00-\$180.00	\$90.00		
Container Setting	\$120.00-\$250.00	\$120.00		
Vase Insert	\$60.00-\$125.00	\$60.00		
Vase Insert Installation	\$100.00-\$200.00	\$100.00		
Vase Replacement	\$25.00-\$50.00	\$25.00		
December Wreath Package	\$40.00-\$75.00	\$40.00		
Vase (optional) oxidized bronze and installed	\$95.00-\$125.00	\$95.00		
Saturday Service Charge (fee is in addition to regular opening/closing fees):				
Single/companion	\$400.00-\$700.00	\$500.00		
Infant	\$400.00-\$700.00	\$500.00		
Overtime Service - Each one hour after 3 pm	\$125.00-\$225.00	\$125.00		
Administrative Fee	\$100.00-\$200.00	\$100.00		
GOLF COURSE				
<i>Dobson Ranch Golf Course</i>				
Adult				
18 Holes	\$17.00-\$150.00	\$42 - Resident \$55 - Non-Residents		
18 Holes Twilight	\$11.00-\$100.00	\$32 - Resident \$39 - Non-Resident		
Sunset Program	\$9.00-\$39.00	\$14 - Resident \$32 - Non-Resident		
9 hole special (Up to 90 minutes after sunrise)	\$11.00-\$45.00	\$26 - Resident \$38 - Non-Resident		
Junior				
18 holes	\$12.00-\$30.00	\$20		
9 Twilight	\$8.00-\$20.00	\$14		
School Use/Partner Use	0			
Course Buyout	\$0-\$30k	Negotiated based on time, season, event variables		

Description of Service	Current Fee Range	Current Fee Actual Effective 4/1/25 - 3/31/26	Unit	NEW Proposed Fee to Effective 8/1/25- 3/31/26
Stable Putting Course	\$0-\$20/day	\$10 adults 18+; \$5 17-13 years old; \$0 12 and under		
Range Course	\$0-\$20/hr	\$5-\$15/hr, \$0 for 1 hr with Smash Pass		
Count Tickets:				
Ranch Card – includes merchandise, discounts on golf, dining, etc.	\$29.00-\$100.00	\$79 Mesa Residents; \$89 Maricopa County Residents; \$99 non-residents	Annually	
SMASH PASS - same benefits of Ranch Card but also includes 1-hr of daily range use (retail \$15/hr; does not roll over)	\$25.00-\$250.00	\$25/1 month; \$125/6 months; \$225/12 months from date of purchase	Annually	
CLUB RENTALS	\$20.00-\$75.00	\$65		
Range Balls	\$6.00-\$30.00	\$19-\$22 Large, \$10-\$13 Medium, \$4-\$6.50		
Proshop Merchandise	\$0-\$2,500			
Proshop Services	\$0-\$100			
MESA CONVENTION CENTER, AMPHITHEATRE AND THE POST				
Facility Rentals				
Overtime	\$100.00-\$500.00 Hour (In addition to rental outside convention center normal hours: Fri & Sat 7 AM-Midnight; Sun 7 AM- 8PM; Mon-Thurs 7 AM– 10 PM.	\$300		\$330
Centennial Hall (Building C):				
Exhibit Hall (15,000 s.f.)	\$2,000.00-\$4,000.00	\$2,800	Day	\$3,080
Entire Centennial Hall (includes Exhibit Hall, Mesa Room & Main Lobby)(18,000 s.f.)	\$2,400.00-\$4,800.00	\$3,600	Day	\$3,960
If a ticketed event:	\$1,800.00-\$3,600.00 or 12% of gross ticket sales whichever is greater			\$1,980
Library Green	\$350-\$1,000	\$500	Day	\$550
Mesa Room (3,090 s.f.)	\$550.00-\$1,500.00	\$1,000	Day	\$1,210
Half Mesa Room (1,454 s.f.)	\$275.00-\$600.00	\$550	Day	\$600
Quarter Mesa Room (772 s.f.)	\$150.00-\$450.00	\$300	Day	\$330
Plaza (with indoor event)	\$500.00-\$1,000.00	\$900	Day	\$990
Plaza only	\$0-\$3,000	\$1,200	Day	\$1,320
The Post				
The Post- North and South Hall: 5,750 SQFT	\$250.00-\$600.00 Hour (based on the day of week and time of day)	M-Th 7am-4pm, \$250/hr; 5-10pm, \$350/hr; Fr 7am-4pm, \$250/hr; 5pm-12am \$450/hr; Sat 7am-4pm, \$150/hr; 5pm-12am \$270/hr; Sat		
The Post- North Hall: 3,350 SQFT	\$150.00-\$400.00 Hour (based on the day of week and time of day)	M-Th 7am-4pm, \$150/hr; 5-10pm, \$210/hr; Fr 7am-4pm, \$150/hr; 5pm-12am \$270/hr; Sat		
The Post – South Hall: 2,200 SQFT	\$100.00-\$350.00 Hour (based on the day of week and time of day)	M-Th 7am-4pm, \$100/hr; 5-10pm, \$140/hr; Fr 7am-4pm, \$100/hr; 5pm-12am \$180/hr; Sat 7am-1pm, \$120/hr; 2pm-12am, \$180/hr; Sun 9am-6pm, \$120/hr		

Description of Service	Current Fee Range	Current Fee Actual Effective 4/1/25 - 3/31/26	Unit	NEW Proposed Fee to Effective 8/1/25-3/31/26
Palo Verde and Neon Garden – Internal, Sponsored and Partner Event Rental Rates	\$0 - \$200/hr	City Internal and Sponsored Events \$25/hr, Overtime \$37.50/hr; Partner Events \$75/hr, Overtime \$112.50/hr		
THE POST - Kitchen	\$100.00-\$250.00	\$250.00	Day	
THE POST - BOARD ROOM	\$25.00-\$100.00	\$25	Hour	
THE POST - NEON GARDEN	\$0-\$500	\$250	Hour	
THE POST - ENTIRE FACILITY + NEON GARDEN	\$250.00-\$1,200.00	\$700	Hour	
Conference Center (Building B):				
Entire Conference Center (includes Palo Verde, Theatre, Cholla I & II, Boardroom & Lobby)(9,885 s.f.)	\$1,800.00-\$3,000.00	\$2,700	Day	\$2,970
Palo Verde Ballroom (4,566 s.f.)	\$1,000.00-\$2,000.00	\$1,600	Day	\$1,760
Palo Verde I, II or III (1,522 s.f.)	\$400.00-\$1,000.00	\$700	Day	\$770
Palo Verde I and II or II and III (3,044 s.f.)	\$700.00-\$1,500.00	\$1,200	Day	\$1,320
Cholla Meeting Room I or II (273 s.f.)	\$125.00-\$500.00	\$250	Day	\$275
Cholla Meeting Room I and II (553 s.f.)	\$250.00-\$600.00	\$500	Day	\$550
Conference Theatre (3,016 s.f.)	\$750.00-\$1,800.00	\$750	Day	\$825
Executive Board Room (550 s.f.)	\$125.00-\$250.00	\$250	Day	\$250
Gallery	\$250.00-\$750.00	\$500	Day	\$550
Rendezvous Center (Building A):				
Entire Rendezvous Center (includes Superstition, Apache & Lobby)(7,502 s.f.)	\$1,400.00-\$2,220.00	\$2,100	Day	\$2,220
Superstition Ballroom (5,252 s.f.)	\$1,000.00-\$2,000.00	\$1,600	Day	\$1,760
Superstition North (3,672 s.f.)	\$700.00-\$1,600.00	\$1,150	Day	\$1,265
Superstition South (1,580 s.f.)	\$300.00-\$800.00	\$700	Day	\$770
Apache Room (1,620 s.f.)	\$400.00-\$800.00	\$800	Day	\$800
SUPERSTITION PATIO	\$150.00-\$850.00	\$500	Day	\$550
APACHE PATIO	\$50.00-\$500.00	\$250	Day	\$275
Service Fee:	Up to 20% Service Fee on Convention Center Charges (Rent, Utilities, Labor, Equipment, etc.)	20%		
Box Office Buy-out	\$250.00-\$1,000.00	\$300.00-\$500.00		\$330 - \$550
Box Office Buy-out – Second Day +	\$125.00-\$500.00	\$150.00-\$250.00		\$165 - \$275
Kitchen Rental Fee	\$250.00-\$1,000.00	\$250		\$275
Parking Lots:				
Main parking lot	\$750-\$1,500	\$750	Day	\$825
MILK Way parking lot	\$750-\$1,500	\$750	Day	\$825
Parking Passes	\$10.00-25.00	\$20.00	Per Vehicle	\$22
Move-In/Discounts (on Facility Rent)	1st day of move-in, up to 50% of rental rate			
Day of Event Set Changes	Will be charged for any addtl labor.			

Description of Service	Current Fee Range	Current Fee Actual Effective 4/1/25 - 3/31/26	Unit	NEW Proposed Fee to Effective 8/1/25- 3/31/26
Part Notice Bookings within 30 days of event)	Up to 50% surcharge or discount of rental fees may be applied at the Director's or Designee's discretion.	20% EVENT		
Food and Beverage Items	Provided by City Approved Contractor Food Alcohol			
Audio Visual Equipment and Services	Provided by AV Contractor at market rates			
Audio Visual	\$250.00-\$1,000.00 Day	\$1,000 DAY	Day	
In-House Visual Buy-out	\$30.00-\$50.00 Each Per Day	\$30.00 EACH PER DAY	Each/Per Day	
In-House Mic (Wired) W/House Sound	\$50.00-\$200.00 Each Per Day	\$125.00 EACH PER DAY	Each/Per Day	
In-House Mic (Wireless) W/House Sound	\$30-\$75 Per Event/Per Day			
In-House Video Screen	\$50-\$150 Per Event/Per Day			
In- House Projector	\$150.00-\$500.00 Each Per Day	\$300.000 EACH PER DAY	Each per Day	
Small Sound System	\$25.00-\$75.00 Per Patch/Per Day	\$50.00 PER PATCH/PER DAY	Per Patch/Per Day	
House Sound System Patch Fees				
Miscellaneous Equipment and Services				
Piano Rental (Includes Tuning)	\$200.00-\$500.00 Day	\$500 DAY	Day	
Dance Floor	\$15-\$100	\$40/ 4x4 piece	Piece	
Risers and Staging	\$40.00-\$75.00	\$40.00	Each Section	
Stage Barricade	\$500.00-\$2,000.00	\$1,000.00	Each/Per Day	
Tables (all sizes)	\$6.00-\$30.00	\$6.00-\$30.00	Each/Per Day	
Bike Barricade	\$12.00-\$25.00	\$12.00	Per Section/ Per Day	
Stanchions w/ rope (6 foot section)	\$15.00-\$25.00	\$15.00	Per Section/ Per Day	
Main Hall Drapery 12' H heavy (linear ft-20 ft minimum)	\$5.00-\$20.00	\$15.00	Per Linear Foot/Per Day	
Table Skirting and Linens	\$6.00-\$12.00	\$10.00	Each/Per Day	
Pipe and Drape (Booth Package)	\$55.00-\$75.00	\$65.00	Each	
Podium	\$15.00-\$30.00	\$20.00 EACH	Each	
Chairs	\$1.00-\$10.00	\$5.00	Each/Per Day	
Pipe and Drape (For Room Dividing)	\$3.00-\$10.00	\$3.00	Per Linear Foot/Per Day	
Water Connection	\$100.00-\$150.00	\$105.00	Each	
Water Fill and Water Empty	\$0.25-\$1.00	\$0.25	Gallon	
5 Gallon Water Jug (Cooler Included)	\$25.00-\$75.00	\$50.00	Gallon	
Drayage/Storage Provided by Convention Center	\$5.00-\$250.00	\$10.00	Box/Quantity Per Day	
Drayage/Storage Through AV Contractor	Provided by AV Contractor and billed by the pound at market rates	Provided by AV Contractor and billed by the pound at market rates		
Roll Off Dumpster (various sizes)	\$400.00-\$800.00	\$400.00	Per Pick Up	
Event Equipment Miscellaneous	\$10.00-\$250.00	10.00-100.00 based on item/EACH	Each/Per Day	
Electric Service:				
120 Volt, 20 Amp, electric outlet	\$55.00-\$125.00	\$85.00		

Description of Service	Current Fee Range	Current Fee Actual Effective 4/1/25 - 3/31/26	Unit	NEW Proposed Fee to Effective 8/1/25- 3/31/26
3 Volt, 3-phase, 20 Amp, will be subject to a min. of 8-hour labor, flat rate of:	\$200.00-\$300.00	\$200.00		
10 Amp, 3-phase electrical	\$1,200.00-\$3,600.00	\$1,000.00	Day	
20 AMP, 3-phase electrical	\$600.00-\$1,800.00	\$500.00	Day	
30 AMP, 3-Phase Electrical	\$300.00-\$900.00	\$250.00	Day	
Utility Fee – DJ	\$100.00-\$400.00	\$150.00	Day	
6-Outlet Strip w/Circuit Breaker	\$15.00-\$25.00	\$15.00		
Telephone and Internet/LAN Services:				
Telephone (per line, with set, if requested)	\$80.00-\$150.00	\$80.00		
Internet/LAN Services (DSL):				
First Day	\$150.00-\$450.00	\$150.00-\$250.00		
Additional Day	\$35.00-\$80.00	\$35.00-\$80.00	Each	
Wireless Internet Connectivity:				
Password/Connection	\$50.00-\$100.00	\$75.00-\$150.00		
Per Additional Connection	\$5.00-\$15.00	\$5.00		
<i>Labor</i>				
Clean-up / Cleaning	\$250.00-\$3,000.00		Event/Occurance	\$550
Room Turns	\$75.00-\$500.00		Each	\$82.50
Banner Hanging	\$20.00-\$100.00		Each	\$55
Event Labor Miscellaneous	\$15.00-\$100.00 Hour			16.50 - \$100
<i>AMPHITHEATRE</i>				
<i>Facility Rental</i>				
Non-Ticket Events	\$1,200 - \$15,000	negotiated per proposal		
Commercial Ticketed Event (Event Day)	\$2,500 or 12% of gross ticket sales (whichever is greater, capped at \$20,000)			
Non-Commercial, Community or Fundraising Events	\$1,200.00-\$5,000.00 Day			\$1320 - \$5000
Non-Event Day (Load-in, rehearsal, load-out)	\$600.00-\$2,500.00 Day			\$660 - 2500
Decibel (dB) Limit Violation	\$2,500.00 Occurrence			
Sound Curfew Violation	\$1,000.00 Occurrence			
Concessionaire Buy-Out	\$500.00-\$2,500.00 Day			\$550-2500
<i>Box Office</i>				
Ticket Buyer Fees (Service Fees, Mailing, Will Call Facility Fee, Promoter Bump, Ticket Printing, Charity, Per Order Fee, Etc.)	\$0.75-\$250.00 Per Ticket/Per Order			
<i>Promoter Fees:</i>				
Ticket Printing / Consignment Fee	\$0.25-\$1.00 Per Ticket		\$1	
VIP Lift / Package Administration Fee	\$500.00-\$2,500.00 Per Event			
AudienceView Event Build	\$500.00-\$1,500.00 Per Event			

Parks and Recreation Advisory Board

MAY 2025 DIVISION UPDATES



mesa·az

PARKS, RECREATION AND
COMMUNITY FACILITIES



Recreation Division



Aquatics

- **Water Safety Instructor classes taught 422 free swimming lessons by new instructors.**
- **Over 150 participants were in Skills Review classes prior to skills testing for lifeguard positions.**
- **Hired 32 new lifeguards this year.**
- **Completed facility interior improvement projects at 7 pools.**



Adaptive

- Special Olympics Basketball and Cheer groups attended the Area Competition.
- 99 participants attended the Decades Dance.
- Team Mesa attended the SOAZ Summer Games state track meet and volleyball tournament.



Athletics

- Adult Sports hosted the All City softball tournament with 30 teams. The Mesa team won the Men's division.
- Youth Sports began its first Futsal league with 60 participants enrolled.
- Sports field rentals hosted over 2,500 field rental permits in the last 2 months, 600 more than the same time last year.
- Mesa Tennis and Pickleball Center hosted 2 USTA tournaments with 150 athletes. Court rentals are up over 400 more than last year.



Front Desk



Spring registration closed with 9,670 registrations and \$272,370.70 in revenue.

Summer Registration began with 6,263 registrations in the first 2 hours!

Mesa Registration Scholarships are providing over \$55,000 worth of fee assistance to Mesa residents.

Park ramadas hosted over 800 permitted events in the past 2 months.



Recreation Centers

- Afterschool programs at the Tri-Centers had over 240 participants registered last month.
- Red Mountain Center averages over 6,000 attendees per month for the 80+ fitness class offerings.
- Spring Break camps brought in 148 participants and \$14,950 in revenue.

Youth Programs Update

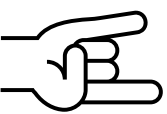
- Fun N Fitness continues their daily visits with 3,502 participants last month.
- The M.O.R.E. unit is having big success visiting multiple parks with 1,873 participants.
- Registration for summer camps has begun with a strong showing and 4 of 8 camps filling up in the first few weeks of registration.



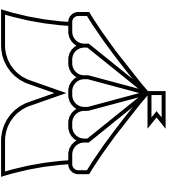
COMMERCIAL OPERATIONS



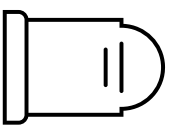
Mesa Convention Center
The Post



Mesa Amphitheatre



Special Events Office



Mesa Cemetery



Dobson Ranch Golf Course

Convention Center | Amphitheatre | The Post

AMP CONCERTS

January 17-18	8123 Fest – The Maine
March 28	Strive To Be
April 19	Crankdat
April 29	Sturgill Simpson
May 10	Billy Currington

UPCOMING

August 8	Maoli
August 15	Keshi
September 7	Ken Carson
September 12	Tribal Seeds
September 23	HAIM
October 10	The Story So Far
December 13	Turnpike Troubadours

The POST (February - April)

Banquets	9
Consumer Shows	0
Meetings	19
Private Parties	6
Weddings	0
COM Sponsored Events	2
Other	8
Total Events	44

Revenue

	FY23	FY24	FY25
Feb	\$ 361,025	\$ 676,721	\$ 420,100
Mar	\$ 584,845	\$ 887,324	\$ 792,886
Apr	\$ 596,716	\$ 655,904	\$ 591,232*
Total	\$ 1,542,587	\$ 2,219,949	\$ 1,804,217

*as of 4/28/25

Current YTD Cost Recovery = 101.48%

Convention Center | Amphitheatre | The Post

Facility Projects

- Neon Garden – Grand Opening event Thursday, 5/15, 6:00-8:30pm (*Open to public at 7pm*)
- Facility Improvement Study – Positive feedback from Council presentation; Engineering evaluating cost estimates
- The Post – HVAC chiller replacement scheduled 6/2 - 6/13





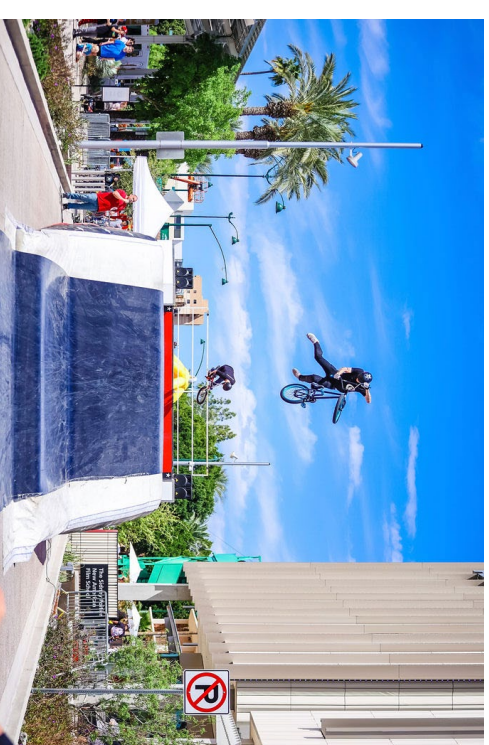
SPECIAL EVENTS

Spring Events

- 4/5/25 - Cyclomesa at the Plaza Park – 750 attendees
- 4/9-4/12 & 4/15-4/19/25 - Mesa Temple Easter Pageant
 - 69,130 attendees (averaging 6,913 per day)
 - AZ Feastivals attracted nearly 6,000 to Pioneer Park
- 4/12/25 - Celebrate Mesa at Pioneer Park – 6,760 attendees
- 4/18-4/19/25 - Breakaway Festival at Riverview Park – 16k+ attendees
- 4/19/25 - Easter Events
 - PD Easter Egg Hunt at Reed Park
 - Easter Egg Hunt at Eastmark Great Park
 - CM Spilsbury Easter Breakfast at Greenfield Park
 - DMA Easter Eggstravaganza at The Yard Off Main – 1,800 attendees
- 4/26/25 - Breakthrough T1D Walk (formerly JDRF) at Riverview Park – 2,300+ attendees

Upcoming Summer Events

- 6/7/25 - Skate Party at The Plaza
- 7/4/25 - Arizona Celebration of Freedom at the Mesa Convention Center and Amphitheatre
- 7/4/25 - Happy Birthday USA the Eastmark Great Park

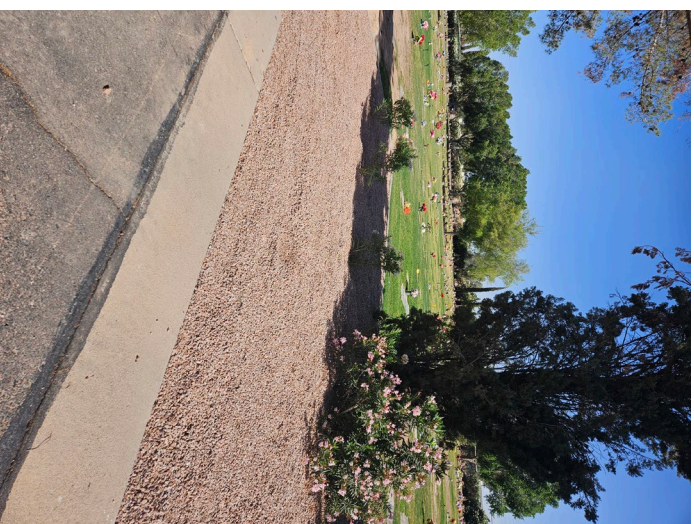


Dobson Ranch Golf Course Community Engagement & Outreach

- New Stable Watering Hole Bev Station and Outdoor Grill opened
- Netting for the sides of the driving range is currently working through permitting. Install expected to start late May or early June.
- New Golf Cart fleet is ordered and will be transitioned during overseed. New carts will have GPS.
- Mesa Community College Women and Men's team qualified for the National Championship. Women's team is currently ranked #1 in Nation. Coach Guerra shared that Dobson Ranch GC has played part in the success by providing the access to practice and play along with recruiting.
- Junior Program continues to grow and being extremely well liked by kids and parents. Will be hosting several Summer Clinics through Pops & Jr.
- Offering great Summer Youth Golf Promotion for local youth for Inrange. With the covered shade and central location, kids love the ability to play games on range along with putting on the Stable.
- Launching Summer Youth Inrange Golf League. League will be open to youth from 5-17 and all skill levels.



Mesa Cemetery



- Cemetery clean-up scheduled for 5/15
- Weed Control and Fertilizer applied throughout the grounds
- 7 dwarf oleanders bushes were planted and granite was spread at the Country Club entrance. More shrubs and irrigation improvements will be added to this area.
- Completed piping and backfilling sprinkler trenches off of 3rd street
- Early discussions have begun to confirm phasing of next expansion



Park Planning & Operations



Carriage Lane Park

Project Components

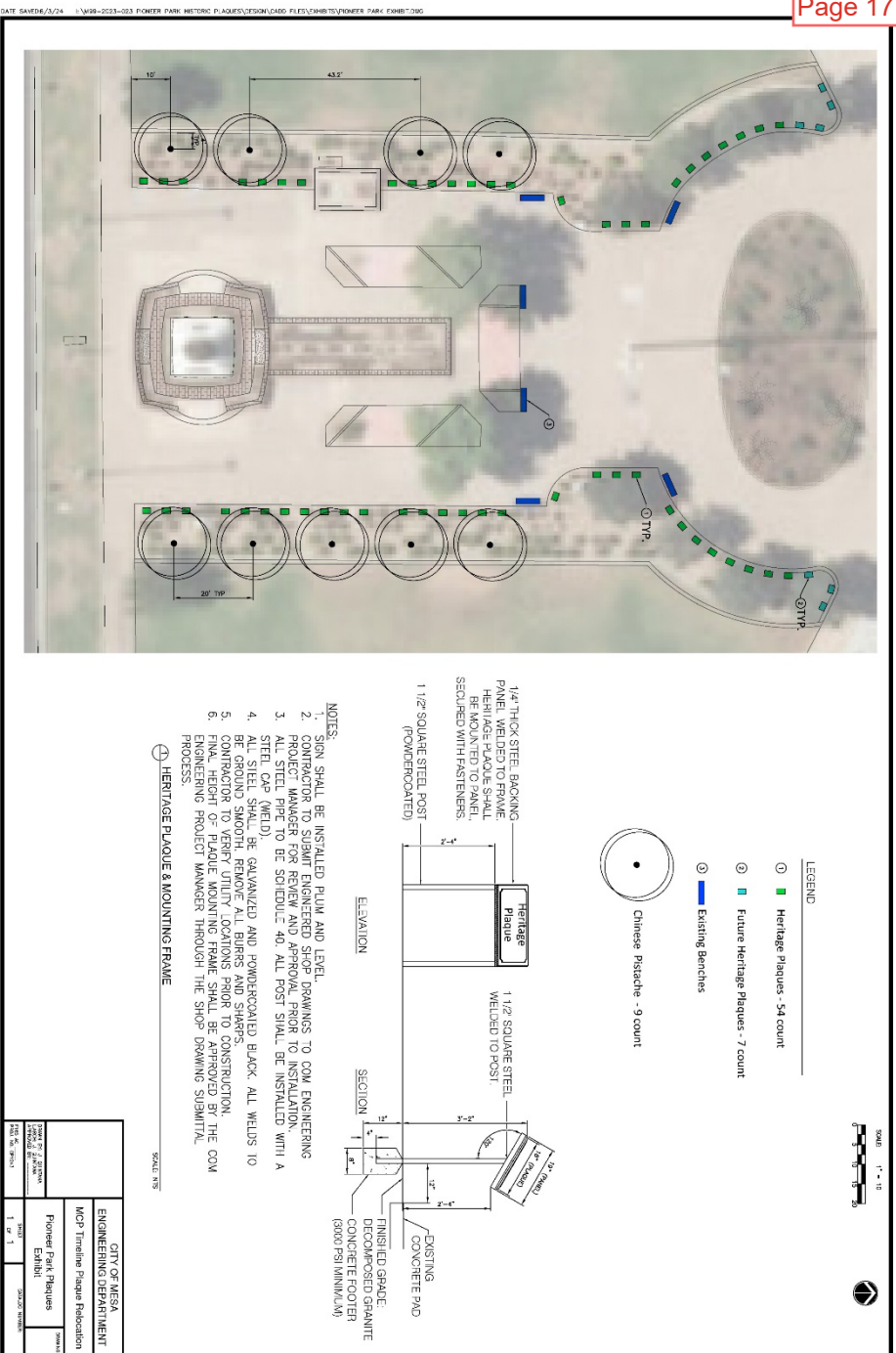
- Irrigation System Renovation
- Reduce watering window to 8-hours
- Reduce non-playable turf by 3.06 acres
- Estimated water savings: 4.69 M gallons

Construction Costs

- \$2,000,000

Construction Schedule

- Project Start: February 2025
- Completion: August 2025



Mesa City Plaza Timeline Plaque Relocation

Project Components

- Relocate 53 heritage timeline plaques
- Add four new plaques

Construction Costs

- \$170,491

Construction Schedule

- Project Start: April 2025
- Completion: May 2025



Reed Park Playground Renovation

Project Components

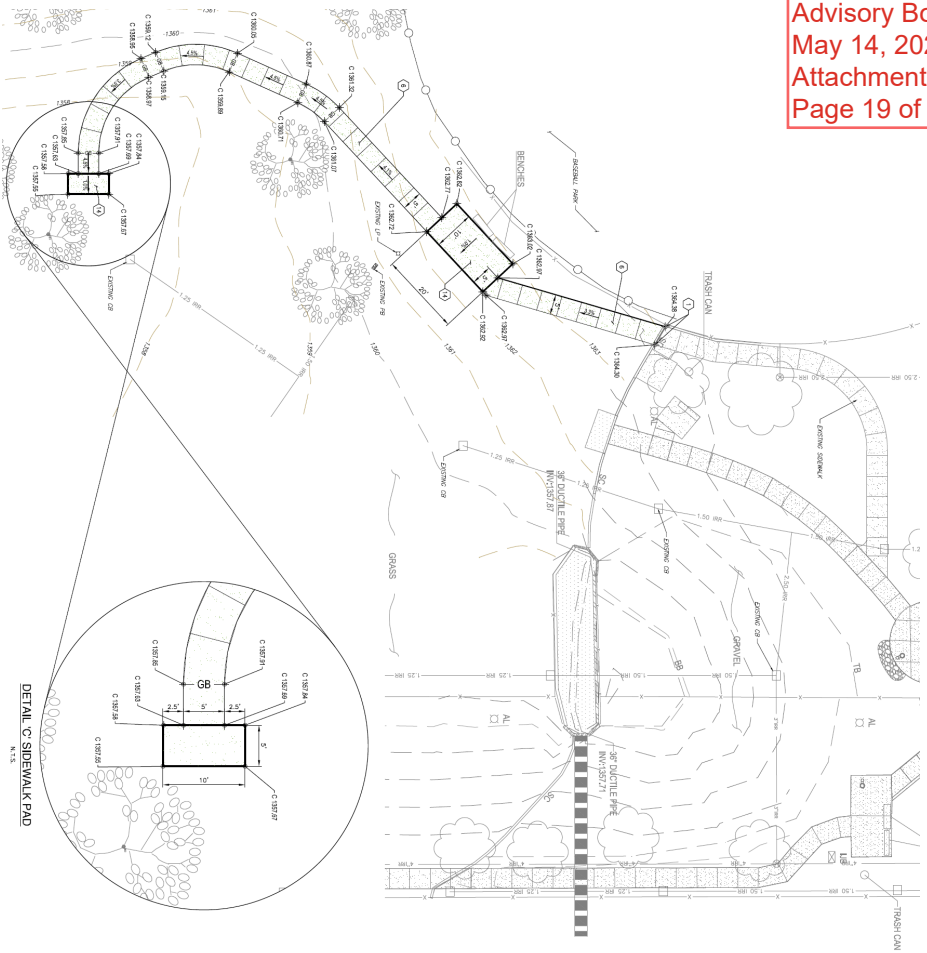
- ADA upgrades
- Play equipment areas for ages 2-5 and 5-12
- Exercise equipment for ages 14 and up
- Shade structures
- Safety surfacing

Construction Costs

- CDBG Award \$1,317,806
- Operations Funding \$182,149
- Total \$1,499,955

Construction Schedule

- Start: April 2025
- Completion: August 2025



Quail Run ADA Updates

Project Components

- ADA compliance:
- Remove and replace concrete
- Update parking stalls
- Add concrete pathway to bottom of basin

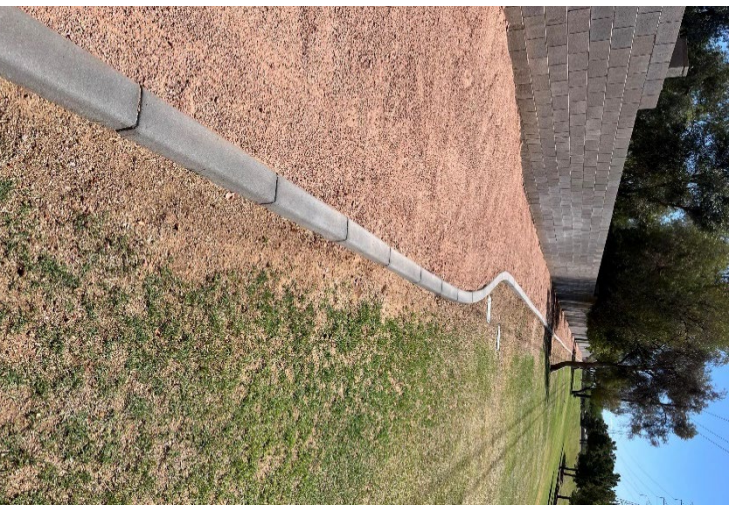
Construction Costs

- Operations Funding \$246,119

Construction Schedule

- Start: May 2025
- Completion: June 2025

Turf Conversion



Project Components

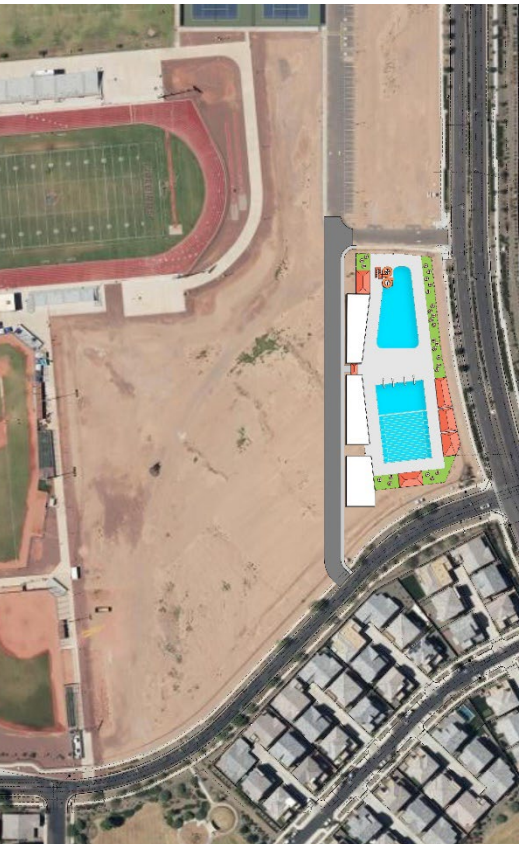
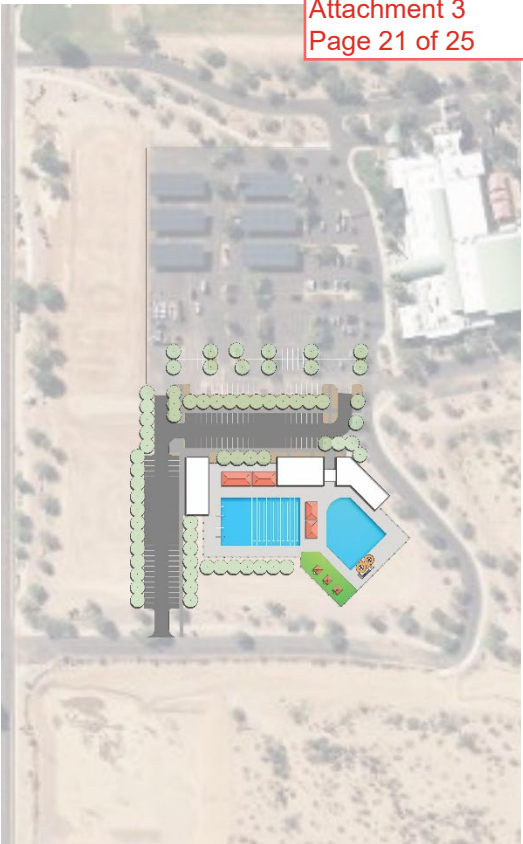
- Removal of 5.08 acres of turf
- 54 locations impacted
- 17.65-acre feet which equates to 5,750,472 gallons a year in water saved
- Turf to be replaced with landscape curb and granite

Construction Costs

- Grant Award \$1,061,626
- Operations Funding \$353,875
- Total \$1,415,501

Construction Schedule

- Council Presentation on January 18
- Dollars released June 2024
- Turf conversions completed by June 2026



Aquatics – Bond 2024

Project Components

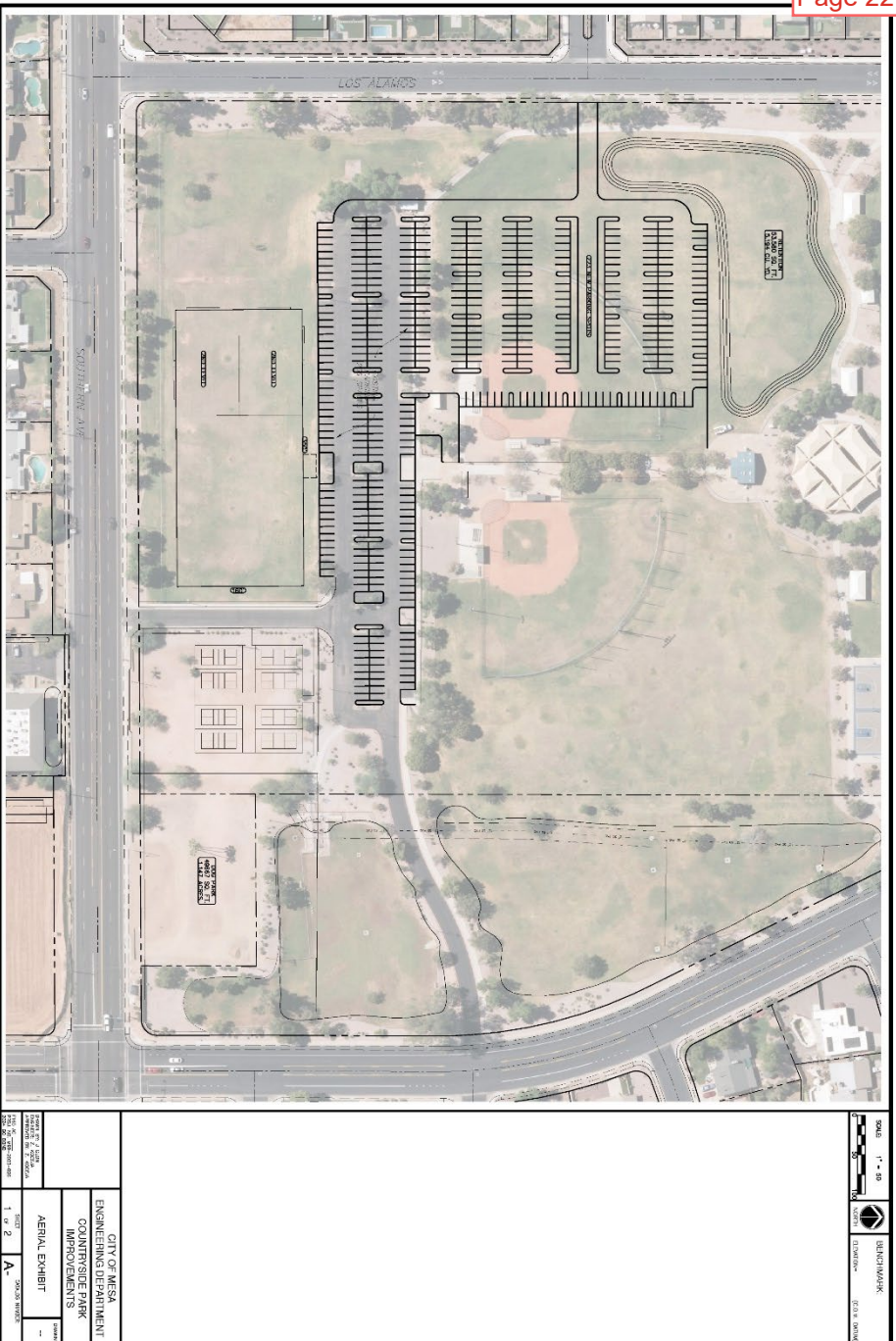
- Demolition of Fremont Pool
- Construct new pool at Red Mountain Center
- Construct new pool at Eastmark High School

Construction Costs

- Fremont Demo & Red Mountain Aquatic Center \$34.3M
- Southeast Aquatic Center \$32.9M
- Total \$67.2M

Construction Schedule

- Fremont Pool Demolition: Fall 2025
- Red Mountain Aquatic Center: Spring 2029 to Fall 2031
- Southeast Aquatic Center: Winter 2028 to Spring 2030



Indoor Recreation Center – Bond 2024

Project Components

- Construction of new indoor recreation center at Countryside Park
- Two collegiate sized courts
- Indoor walking track
- Indoor gym
- Multi-use rooms
- Dance/aerobic rooms
- Kids club
- Outdoor pickleball courts

Construction Costs

- \$52M

Construction Schedule

- Winter 2028 to Fall 2030



Projects in Design

- Arpine Park Playground Improvements – 30% Design Documents
 - Construction: Winter 2025 to Summer 2026
- Countryside Dog Park (Bond 2018) – Design Development
 - Construction: TBD
- The Courts at Eastmark – 100% Design Documents
 - Construction: Summer 2025 to Winter 2025
- Northeast Mesa Regional Trails (Bond 2024) – Design Development
 - Construction: TBD

Red Concept - Desert Farmhouse: Model Views- Early Phase



Projects in Design – Cont.

- Park Renovations (Bond 2024 – Augusta Ranch, Carriage Lane, Heritage, Meadowgreen, Monterey, Shepherders, and Woodglen) – Design Documents 30%
 - Construction: Winter 2025 to Summer 2026
- Signal Butte Park Phase II (Bond 2018) – 100% Design Documents
 - Construction: Summer 2025 to Summer 2026
- Sirrine House Historic Preservation – 60% Design
 - Construction: Winter 2025 to Summer 2026
- Whitman Park Playground Improvements – 30% Design Documents
 - Construction: Winter 2025 to Summer 2026

m.e.s.a.az

